

# WHO IS YOUTH ALIVE?

Youth Alive Trust was established in 1989 to support young people in New Brighton and surrounding suburbs. We aim to support young people holistically; socially, emotionally, mentally and spiritually through our programmes, our staff and volunteers.

To learn more about who we are and what we do, check out our website!

<https://www.yat.org.nz>

Grace Vineyard Beach Campus  
111 Seaview Road, New Brighton,  
Christchurch

## OUR PROGRAMMES

1. Weekly Clubs
2. School Youth Workers
3. Holiday Programmes & OSCAR
4. Camps
5. Counselling and Mentoring
6. Mana Ake
7. Community Events
8. Parenting and Pre-school programmes
9. Amplify School of Music
10. Volunteer Training and Support



## ROCK SOLID



# YEAR 7 - 8

**FRIDAYS 4:00-6:00pm**

**SUPPORT YAT BY USING  
BUSINESSES THROUGH**



**@YOUTHALIVETRUST**



**YOUTHALIVETRUSTNZ**



**[www.yat.org.nz](https://www.yat.org.nz)**

## WHAT

Rock Solid is a weekly club just for intermediates. We do in-house events, as well as some outings, joint events with other intermediate Clubs and also a couple of camps throughout the year - so get ready for some wild, zany, funky times! It's run by staff and a group of volunteers and volunteer leaders.

Our programmes have a few minutes where we share Christian values. Nothing is forced or coerced on anyone. Please don't hesitate to contact us if you have any further questions.

## WHEN & WHERE

Rock Solid runs during the school term on Fridays from 4:00pm - 6:00pm. Doors open at 3:50pm. Young people must be signed In and Out of each session.

Entry through 111 Seaview Road

They may do this themselves with their guardians permission. Some weeks may finish later, but we will let you know.

## COST

\$50 per term, including outings. Alternatively you can pay \$6 per week but outing costs are extra. You can pay with cash or eftpos but we prefer payments direct into our bank account. Do not let money put you off coming; speak to us if you have concerns. We keep costs down thanks to grants from CCC, Lotteries, Rata Foundation and donations from individuals through our Friends of YAT.

**NAME: Youth Alive Trust**  
**ANZ: 11-7892-0066444-00**  
**REF: RS & Child's name**

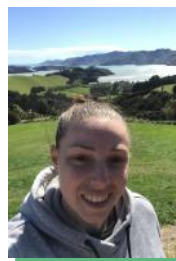
## REGISTRATION

You can register at  
<https://yatclubs.aimyplus.com>

If you have booked before, use your same email address and password to log-in. If you've not registered for YAT programmes before, click 'New Parent', then complete your profile before making a booking.

"Always remember  
You're braver  
than you believe,  
stronger than you seem  
and smarter than you think."  
- A.A. Milne

**EMMA: COORDINATOR**



# ROCK SOLID

## TERM 1

**FEBRUARY 16TH**

No Rock Solid.  
Leaders Meeting

**FEBRUARY 23RD**

Ice Cream  
Bonanza

**MARCH 1ST**

New Brighton  
Kaitiakitanga

**MARCH 8TH**

Beach Battles

**MARCH 15TH**

Clip n Climb  
**Late finish 6:30pm**  
\$15 if not paid term fee

**MARCH 22ND**

Easter  
Eggstravaganza

**MARCH 29TH**

No Rock Solid  
Good Friday

**APRIL 5TH**

Fear Factor

**APRIL 12TH**

Breaking World  
Records

# PROGRAMME INFO 2024

[rego@yat.org.nz](mailto:rego@yat.org.nz)

03 388 1001

**REGISTER**

<https://yatclubs.aimyplus.com>