

# Bookings

All Bookings are done online at

<https://yat.aimyplus.com>

- ⊕ If you have used Aimyplus before at a different agency, you can use the same username and password
- ⊕ If you have not used Aimyplus before, please create a profile and do a booking following these steps:
  - ⇒ Click on 'Make a booking'
  - ⇒ Select child's name
  - ⇒ Change Programme Venue: 'Youth Alive Oscar'
  - ⇒ Select 'Holiday Programme' & click 'Next'
  - ⇒ Select the programme appropriate to your child's age & select all three days
  - ⇒ Click 'Next', 'Next' and 'Finish'

There are 20 places available for young people on the Piwakawaka Holiday Programme. The daily schedule includes a 5 min Christian content module, such as sharing a Christian value or Bible story. Nothing is forced or coerced on anyone.

## Simple OSCAR Subsidy Declaration

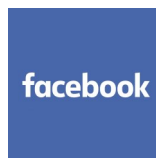
Check out if you qualify for FREE or subsidised costs:

<http://www.workandincome.govt.nz/products/a-z-benefits/oscar-subsidy.htm> When you register on Aimyplus with your WINZ number, we can assist you with your application.

## Who is Youth Alive Trust?

Youth Alive Trust, established in 1989, aims to support young people holistically - socially, emotionally, mentally and spiritually through a variety of programmes, including:

1. Weekly Clubs
2. In-school Youth Workers
3. Holiday Programmes and OSCAR
4. Camps
5. Mana Ake
6. Counselling and Mentoring
7. Community Events
8. Parenting and Pre-school Programmes
9. Amplify School of Music



## Piwakawaka Holiday Programme



### Years 7 - 9

19 - 23 April 2021

8:30 - 15:30 or 18:00



Grace Vineyard Beach Campus

111 Seaview Road, New Brighton

☎ 03 388 1001

email: [rego@yat.org.nz](mailto:rego@yat.org.nz)

[www.yat.org.nz](http://www.yat.org.nz)



# Piwakawaka | Years 7 - 9

111 Seaview Road, New Brighton

In Days	08:30 - 15:30		\$30.00
Outing Days	08:30 - 15:30		\$35.00
In Days Extension	08:30 - 18:00		\$42.00
Outing Days Extension	08:30 - 18:00		\$47.00



## Laser Strike!!

Mon  
19  
Apr



Laser Strike and orienteering at Halswell Quarry. Bring sun hat, walking shoes, lunch & drink bottle.

## Roller Skating

Tue  
20  
Apr



Roller skating at Lyttleton Rec Centre, with a game of Disc Golf afterwards. Bring comfy shoes, sun hat, lunch & drink bottle

## Time Zone

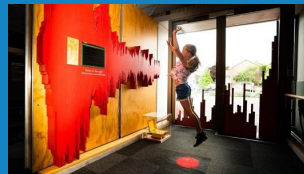
Wed  
21  
Apr



Test your skills at TimeZone and explore the Adventure Park! Bring lunch, drink bottle, walking shoes, warm clothes & hat

## Quake City

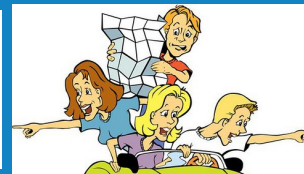
Thu  
22  
Apr



Quake City museum followed by an adventure around the CBD & lunch @ Victoria Square. Bring lunch, drink bottle, sunhat & comfy shoes

## Van Rally

Fri  
23  
Apr



We're heading out to try some challenges and games around all of Christchurch. Bring lunch, water bottle and comfortable shoes.

For more information, call 03 388 1001 Or 020 4152 0494  
or email [rego@yat.org.nz](mailto:rego@yat.org.nz)

Book now at [yat.aimyplus.com](http://yat.aimyplus.com)